

DPABI Animal Data Processing

Chao-Gan YAN, Ph.D.
严超赣
ycg.yan@gmail.com
<http://rfmri.org>
Institute of Psychology, Chinese Academy of Sciences

1



The DPABI software interface shows a list of modules. The 'DPARSF 4.5' module is highlighted with a red box.

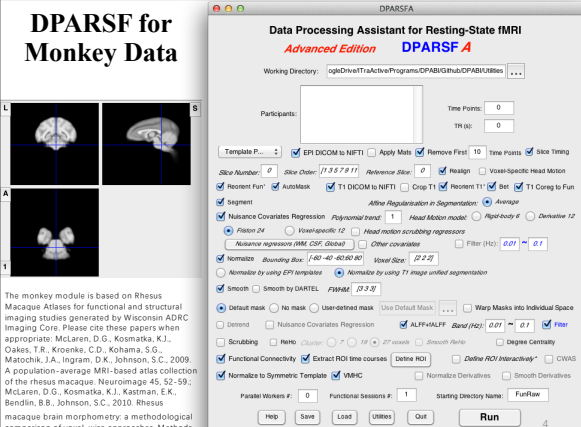
2



The DPARSF software interface shows a list of modules. The 'DPARSF for Monkey Data' module is highlighted with a red box.


3

DPARSF for Monkey Data



The DPARSF for Monkey Data software interface shows a detailed configuration window for processing resting-state fMRI data. The 'DPARSF 4' module is highlighted with a red box.

4



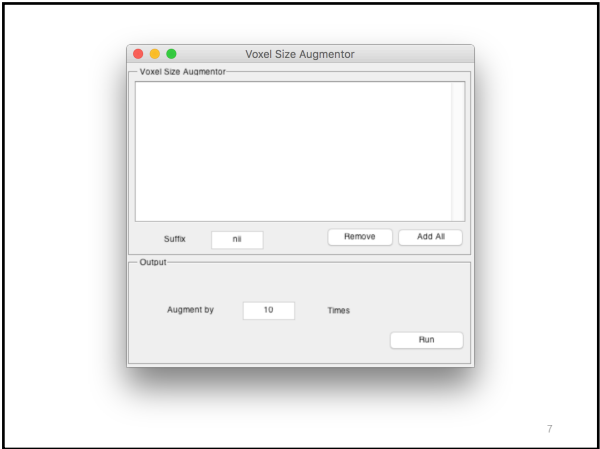
The DPARSF software interface shows a list of modules. The 'DPARSF for Rat Data' module is highlighted with a red box.

5

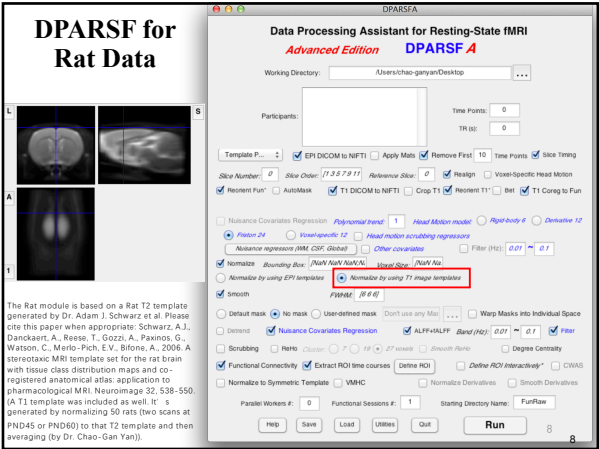


The DPABI software interface shows a list of modules. The 'Utilities' module is highlighted with a red box.

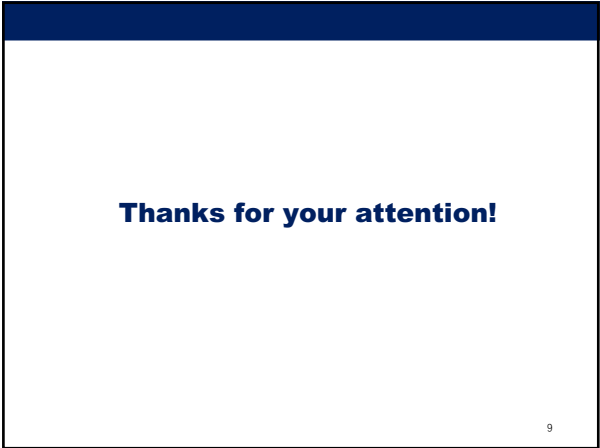
6



7



8



9